



# ADDRESS

Lifting & Technical Solutions

A DIVISION OF ADDRESS ELECTROMECHANICAL CONTRACTING LLC

“We Listen,  
“We Design,  
And Build the System That’s Right For You”

## ABOUT US

We Address are a group of engineers specialised in the supply and service of EOT cranes.

We also have expertise in the manufacture and installation of special purpose machines .

Our services are also extended in the supply of electrical , mechanical, hydraulic and pneumatic systems.

We aim at providing products and services adhering to the best quality and technological standard meeting the customer and market needs.

## OUR MISSION

Our mission is to provide the highest level of solutions & services, while achieving 100% customer satisfaction.

## OUR VISION

To become one of the leading and dedicated companies for manufacturing & technical services in UAE and World wide with outstanding quality & customer fulfillment.

## WHY CHOOSE US?

- We are a trustworthy Technical services for Crane & SPM with strong reputation and reliable management team of professionals.
- Ensure standard quality & service.
- On-Time project completion.
- Ensuring customer satisfaction.
- We have the knowledge and expertise to repair and maintain your cranes, hoists and Machinery other lifting equipment's through our in house engineers and technicians.





## Single Girder EOT Cranes



Single girder cranes offer better hook approach for both the trolley and the bridge travel than a double girder crane . On a single girder crane, the bridge consists of one girder beam supported on each side by an end truck. The trolley and hoist are most commonly underhung, meaning they run on the bottom flange of bridge. The bridge itself can either be top running or bottom running in design.

## Double Girder EOT Cranes

Double girder cranes can provide an extra hook height because the trolley and hoist are placed between or on top of the cross girders.

On a double girder crane, there are two girder beams that make up the bridge and they're supported by an end truck on each side. In most instances, the trolley and hoist run on a rail installed on top of the bridge . With a double girder design, you gain the depth of the cross girder design, if the hoist is placed between or on top of the cross girders-providing an extra hook height in most cases.



## Gantry Cranes

We offer a full range of Gantry Cranes for any budget, capacity or size. Gantries are a great solution for mobile applications within a facility. We offer gantry crane solution small enough to be set up with 1 to 2 people and moved easily throughout a building on the small capacity. For bigger jobs we offer Motorized Gantry Cranes that are great for larger loads upto 200 ton.



## JIB Cranes

We are committed to supplying a Quality Jib Product with competitive prices and the quickest delivery possible. Jib cranes lift and transport materials in full circles (360 degrees) or semi-circles (270 degrees) and half circle (180 degrees) around their support structure. These jib cranes can also be used to transfer materials to subjected workstations. Hoists, manipulators, balancers or other under-the-hook devices can be installed on the jib's' booms. Jib cranes have three directions of movement, rotational around the axis, traversing (trolley movement along the jib) and vertical (hoist up / down motion). Jib cranes can be configured to have any bination of these motions be either motorized or manual.





## Electric Chain Hoists and Manual Chain Blocks

We can supply and install high quality industrial and entertainment electric chain hoists and manual chain blocks from reputed European brands for lifting and suspending loads up ranking from 125kg to 20000kg. We have an experienced and trained sales team who are more than happy to guide you through the right selection process and help you select the correct model.

We like to ensure and provide you with an electric chain hoist that will suit all of your needs, not just lifting the desired weight but also with the correct voltage, duty cycle, beam size, lifting height and deciding on what speeds your motor should run at. After all an Electrical Chain Hoist is a serious investment in productivity and choosing the right hoist will make the work light for a heavy job.



### Facilities Management for Machines & Cranes.

Clients with a large number of Cranes /often find it beneficial to have one or more dedicated Service Engineers permanently assigned to their site. These Exclusive Maintenance Partnership provide the high level of care and responsiveness often required for a high volume, high value productive environment as they are tailored to each individual site's requirements. You can be sure that our team will provide the exact level of care you need.

Our assigned engineer(s) would attend your site every day to undertake:

- **Planned Preventative Maintenance (PPM)**
- **Reports Of Thorough Examination (ROTE)**
- **Bespoke Maintenance Checks**

This permanent on-site presence then means that in the event of a breakdown, your assigned engineer will be immediately to be available on hand to respond with repairs, as well as being available for any other requests that you may have.

## Breakdown Service 24/7

We operate a nationwide 24/7 breakdown repair service, support by well equipped team of technicians. Our network of on-call engineers will respond promptly in the event of a breakdown and will undertake to troubleshoot and repair the problem without delay. Our 24/7 breakdown service is available to anyone, but maintenance contract holder' call will be prioritized. Call at any time day or night, for a prompt and effective response from one of our highly experienced, reliable engineers.

## Relocation for Cranes/Machines

Relocating works often raises the issue of what to do with your lifting equipments and machines at the old site. Simply leaving it is a situation where it may not be used to its full potential. Purchasing new equipment for the new site is inefficient and costly.

But what if your machineries could be relocated in conjunction with your operations, putting them to more productive use and saving the unnecessary expense of purchasing a new one?

A lot of customers assume that this can't be done. But **WE CAN**.

- Safely relocate all lifting equipment ,machine and gantries: including removal, shifting, reinstallation and recertification.
- Reinforce structures to accommodate the crane relocation.
- Modify spans, gantry lengths, lift heights, SWLs and hoisting speeds to suit the customer requirements.
- Upgrade and refurbish old cranes/ machines.
- Provide additional modification to complete the total solution for your handling needs

## Design and Manufacturing of Special Purpose Machines

Special Purpose Machine (SPM) are those machines which are not available off the shelf. These are not covered in standard manufacturing programs. Therefore, those have to be designed & tailor made as per the customer's specific requirements.



Bending machines



**Rolling Machines**



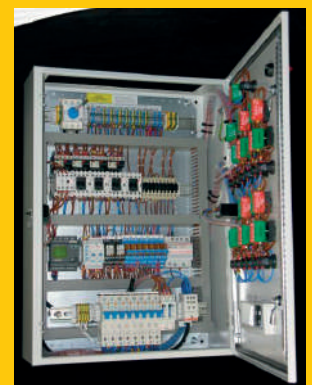
**Sand Blasting Machines**

**Cutting Machines**

## Global Spare Parts and Services

All Major Crane spare parts are available with us, with fast delivery.

- Wireless remotes
- Machine electrical and mechanical spare parts
- Design manufacturing and installation of electrical control panels
- Inverter supply and programming
- Steel Wire Rope
- Power Conductor System
- Control components
- Load Monitoring Devices
- Anti-Collision Sensors
- Ultimate Limits
- Electrical contracting

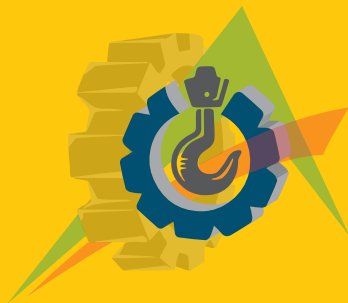




KONECRANES



GIOVENZANA INTERNATIONAL B.V.



# ADDRESS

Lifting & Technical Solutions



+971-551241777, +971-585581777 info@adressemc.com www.addressemc.com

New Industrial Area, Ajman, P.O. Box 23735